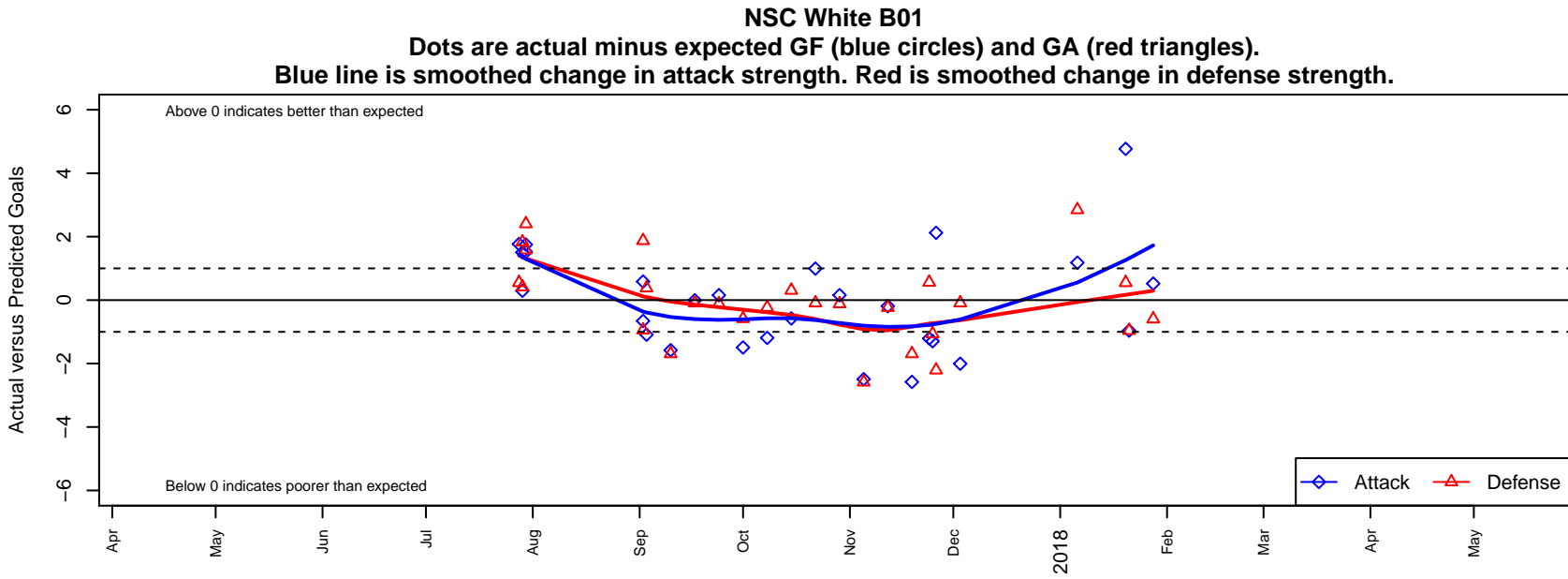


NSC White B01

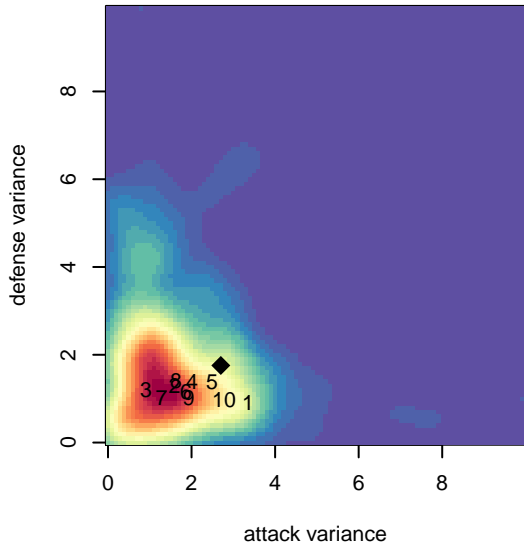
Northshore SC
 Woodinville, WA
 B01 total strength=1279
 attack=7.28 defense=3.81
 fall league = NPSL DIVISION 3 (01) U17

alt names used:
 NSC B01 White
 NSC B01 White
 NSC B01 White
 NSC Wave B01 White

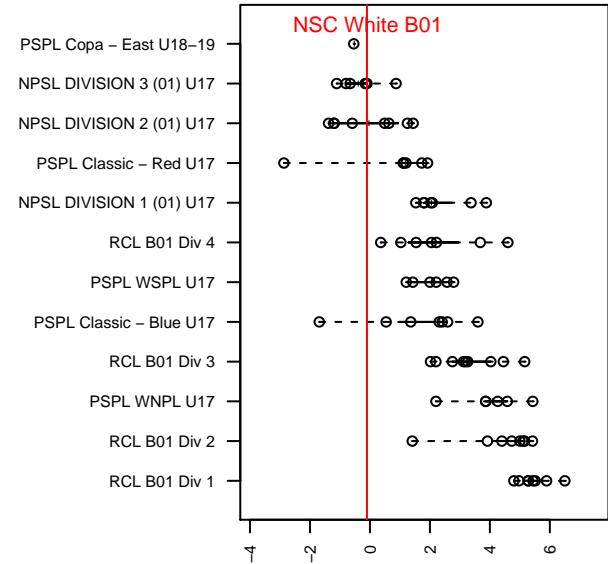
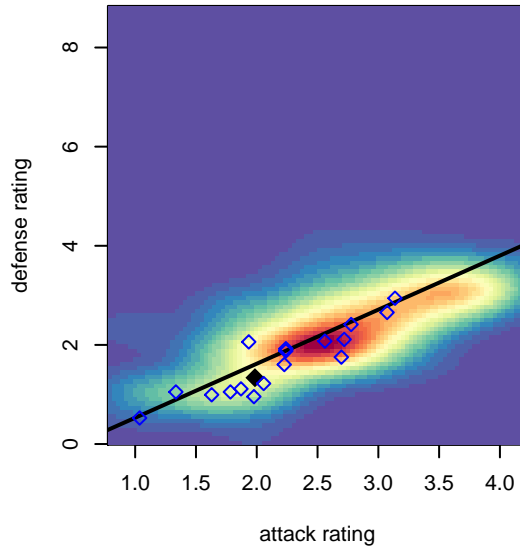
Venues played:
 2017 Crossfire Select U18 Gold
 2017 Labor Day Cup BU17 Silver
 2017 NPSL DIVISION 3 (01) U17
 2017 Cranberry Cup U16-17
 2017 Founders Cup B01 Div A



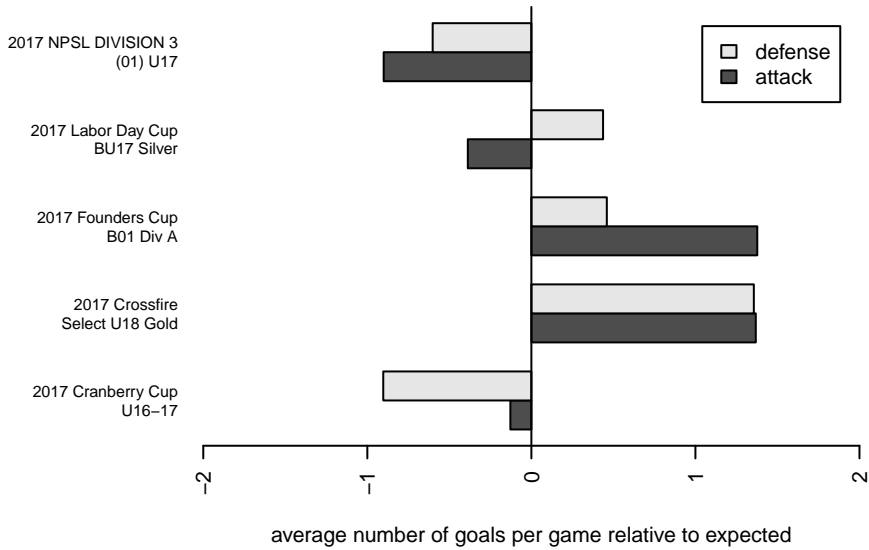
**attack and defense variance (black dot)
relative to other teams
and top 10 in region**



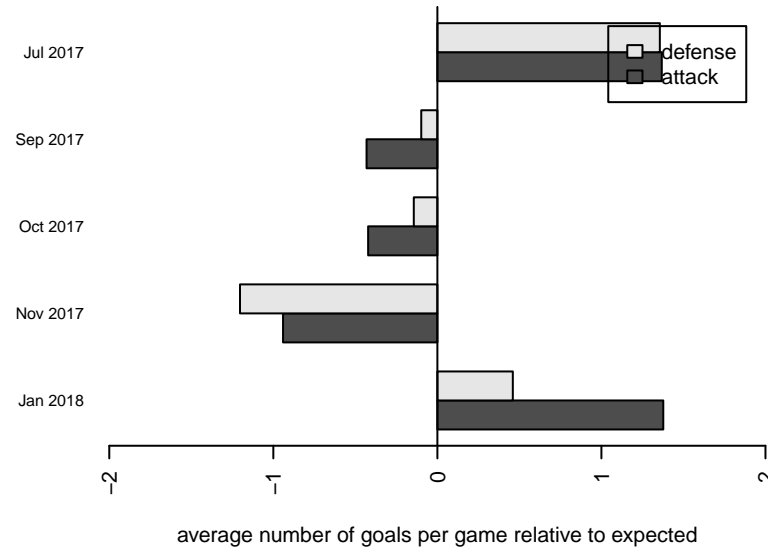
**attack and defense rating
relative to others at age
and all opponents in last 13 months**



Performance relative to 13 month average



Performance relative to 13 month average



date	home		away		venue	pred.home	pred.away
2018-01-28	NSC White B01	2	FWFC Select B01	3	2017 Founders Cup B01 Div A	1.48	2.40
2018-01-21	NSC White B01	0	Seattle United W Blue B01	4	2017 Founders Cup B01 Div A	0.96	3.04
2018-01-20	Newport FC Barca B01	1	NSC White B01	7	2017 Founders Cup B01 Div A	1.55	2.23
2018-01-06	NSC White B01	2	STU Evolution Black B01	1	2017 Founders Cup B01 Div A	0.82	3.85
2017-12-03	WS Thundebirds B01	2	NSC White B01	1	2017 NPSL DIVISION 3 (01) U17	1.91	3.01
2017-11-26	NSC Force B02	3	NSC White B01	6	2017 Cranberry Cup U16-17	0.79	3.88
2017-11-25	NSC White B01	1	Langley United Metro Selects B01	2	2017 Cranberry Cup U16-17	2.30	0.94
2017-11-24	Martin Bittengl B02	2	NSC White B01	0	2017 Cranberry Cup U16-17	2.56	1.21
2017-11-19	NSC White B01	0	IFC Red B01	3	2017 NPSL DIVISION 3 (01) U17	2.58	1.31
2017-11-12	NSC White B01	2	NWSC Deception FC B01	2	2017 NPSL DIVISION 3 (01) U17	2.19	1.77
2017-11-05	NSC White B01	0	Crossfire Select Perry B01	4	2017 NPSL DIVISION 3 (01) U17	2.49	1.41
2017-10-29	NSC White B01	1	FME Xtreme B01	2	2017 NPSL DIVISION 3 (01) U17	0.84	1.88
2017-10-22	NSC White B01	4	WS Thundebirds B01	2	2017 NPSL DIVISION 3 (01) U17	3.01	1.91
2017-10-15	IFC Red B01	1	NSC White B01	2	2017 NPSL DIVISION 3 (01) U17	1.31	2.58
2017-10-08	NWSC Deception FC B01	2	NSC White B01	1	2017 NPSL DIVISION 3 (01) U17	1.77	2.19
2017-10-01	Crossfire Select Perry B01	2	NSC White B01	1	2017 NPSL DIVISION 3 (01) U17	1.41	2.49
2017-09-24	FME Xtreme B01	2	NSC White B01	1	2017 NPSL DIVISION 3 (01) U17	1.88	0.84
2017-09-17	WS Thundebirds B01	2	NSC White B01	3	2017 NPSL DIVISION 3 (01) U17	1.91	3.01
2017-09-10	NSC White B01	1	IFC Red B01	3	2017 NPSL DIVISION 3 (01) U17	2.58	1.31
2017-09-03	NSC White B01	0	Emerald City FC Green B01	2	2017 Labor Day Cup BU17 Silver	1.09	2.38
2017-09-02	Storm King B01	4	NSC White B01	1	2017 Labor Day Cup BU17 Silver	5.87	0.41
2017-09-02	Seattle United S Blue B01	6	NSC White B01	0	2017 Labor Day Cup BU17 Silver	5.05	0.66
2017-07-30	Crossfire Select Taylor B01	2	NSC White B01	3	2017 Crossfire Select U18 Gold	3.58	1.25
2017-07-30	FWFC Select B01	0	NSC White B01	3	2017 Crossfire Select U18 Gold	2.40	1.48
2017-07-29	Wenatchee Valley United Quincy B01	2	NSC White B01	1	2017 Crossfire Select U18 Gold	3.83	0.71
2017-07-29	Crossfire Select Perry B01	1	NSC White B01	4	2017 Crossfire Select U18 Gold	1.41	2.49
2017-07-28	NSC White B01	4	Newport FC Barca B01	1	2017 Crossfire Select U18 Gold	2.23	1.55